

Numerical solutions of 2-D steady incompressible driven cavity flow at high Reynolds numbers

E. Erturk^{1,*},†, T. C. Corke² and C. Gökçöl¹

¹*Energy Systems Engineering Department, Gebze Institute of Technology, Gebze, Kocaeli 41400, Turkey*

²*Department of Aerospace and Mechanical Engineering, University of Notre Dame, IN 46556, U.S.A.*

SUMMARY

Numerical calculations of the 2-D steady incompressible driven cavity flow are presented. The Navier–Stokes equations in streamfunction and vorticity formulation are solved numerically using a fine uniform grid mesh of 601×601 . The steady driven cavity flow solutions are computed for $Re \leq 21\,000$ with a maximum absolute residuals of the governing equations that were less than 10^{-10} . A new quaternary vortex at the bottom left corner and a new tertiary vortex at the top left corner of the cavity are observed in the flow field as the Reynolds number increases. Detailed results are presented and comparisons are made with benchmark solutions found in the literature. Copyright © 2005 John Wiley & Sons, Ltd.

KEY WORDS: steady 2-D incompressible N–S equations; driven cavity flow; fine grid solutions; high Reynolds numbers

1. INTRODUCTION

Numerical methods for 2-D steady incompressible Navier–Stokes (N–S) equations are often tested for code validation, on a very well known benchmark problem; the lid-driven cavity flow. Due to the simplicity of the cavity geometry, applying a numerical method on this flow problem in terms of coding is quite easy and straight forward. Despite its simple geometry, the driven cavity flow retains a rich fluid flow physics manifested by multiple counter rotating recirculating regions on the corners of the cavity depending on the Reynolds number. In the literature, it is possible to find different numerical approaches which have been applied to the driven cavity flow problem [1–34]. Though this flow problem has been numerically studied extensively, still there are some points which are not agreed upon. For example;

*Correspondence to: E. Erturk, Energy Systems Engineering Department, Gebze Institute of Technology, Gebze, Kocaeli 41400, Turkey.

†E-mail: ercanerturk@gyte.edu.tr, <http://www.cavityflow.com>

Contract/grant sponsor: Gebze Institute of Technology; contract/grant number: BAP-2003-A-22

Received 9 October 2003

Revised 26 July 2004

Accepted 31 January 2005

(1) an interesting point among many studies is that different numerical solutions of cavity flow yield about the same results for $Re \leq 1000$ however, start to deviate from each other for larger Re , (2) also another interesting point is that while some studies predict a periodic flow at a high Reynolds number, some others present steady solutions for even a higher Reynolds number. The objective of this work is then to investigate these two points and present accurate very fine grid numerical solutions of steady 2-D driven cavity flow.

Among the numerous studies found in the literature, we will give a brief survey about some of the significant studies that uses different types of numerical methods on the driven cavity flow. In doing so the emphasis will be given on three points; on the numerical method used, on the spatial order of the numerical solution and on the largest Reynolds number achieved.

Recently, Barragy and Carey [2] have used a p -type finite element scheme on a 257×257 strongly graded and refined element mesh. They have obtained a highly accurate (Δh^8 order) solutions for steady cavity flow solutions up to Reynolds numbers of $Re = 12\,500$. Although Barragy and Carey [2] have presented qualitative solution for $Re = 16\,000$ they concluded that their solution for $Re = 16\,000$ was under-resolved and needed a greater mesh size.

Botella and Peyret [6] have used a Chebyshev collocation method for the solution of the lid-driven cavity flow. They have used a subtraction method of the leading terms of the asymptotic expansion of the solution of the N–S equations in the vicinity of the corners, where velocity is discontinuous, and obtained a highly accurate spectral solutions for the cavity flow with a maximum of grid mesh of $N = 160$ (polynomial degree) for Reynolds numbers $Re \leq 9000$. They stated that their numerical solutions exhibit a periodic behaviour beyond this Re .

Schreiber and Keller [26] have introduced an efficient numerical technique for steady viscous incompressible flows. The non-linear differential equations are solved by a sequence of Newton and chord iterations. The linear systems associated with the Newton iteration is solved by LU-factorization with partial pivoting. Applying repeated Richardson extrapolation using the solutions obtained on different grid mesh sizes (maximum being 180×180), they have presented high-order accurate (Δh^8 order in theory) solutions for Reynolds numbers $Re \leq 10\,000$.

Benjamin and Denny [5] have used a method of relaxing the algebraic equations by means of the ADI method, with a non-uniform iteration parameter. They have solved the cavity flow for $Re \leq 10\,000$ with three different grid mesh sizes (maximum being 101×101) and used a Δh^n extrapolation to obtain the values when $\Delta h \rightarrow 0$.

Wright and Gaskell [34] have applied the block implicit multigrid method (BIMM) to the SMART and QUICK discretizations. They have presented cavity flow results obtained on a 1024×1024 grid mesh for $Re \leq 1000$.

Nishida and Satofuka [22] have presented a new higher order method for simulation of the driven cavity flow. They have discretized the spatial derivatives of the N–S equations using a modified differential quadrature (MDQ) method. They have integrated the resulting system of ODEs in time with fourth order Runge–Kutta–Gill (RKG) scheme. With this they have presented spatially Δh^{10} order accurate solutions with grid size of 129×129 for $Re \leq 3200$.

Liao [19], and Liao and Zhu [20], have used a higher order streamfunction–vorticity boundary element method (BEM) formulation for the solution of N–S equations. With this they have presented solutions up to $Re = 10\,000$ with a grid mesh of 257×257 .

Hou *et al.* [17] have used lattice Boltzmann method for simulation of the cavity flow. They have used 256×256 grid points and presented solutions up to Reynolds numbers of $Re = 7500$.

Goyon [13] have solved the streamfunction and vorticity equations using Incremental Unknowns. They have presented steady solutions for $Re \leq 7500$ on a maximum grid size of 256×256 .

Rubin and Khosla [25] have used the strongly implicit numerical method with 2×2 coupled streamfunction–vorticity form of the N–S equations. They have obtained solutions for Reynolds numbers in the range of $Re \leq 3000$ with a grid mesh of 17×17 .

Ghia *et al.* [12] later have applied a multi-grid strategy to the coupled strongly implicit method developed by Rubin and Khosla [25]. They have presented solutions for Reynolds numbers as high as $Re = 10\,000$ with meshes consisting of as many as 257×257 grid points.

Gupta [15] has used a fourth (Δh^4) order compact scheme for the numerical solution of the driven cavity flow. He has used a 9 point (3×3) stencil in which the streamfunction and vorticity equations are approximated to fourth order accuracy. He has used point-SOR type of iteration and presented steady cavity flow solutions for $Re \leq 2000$ with a maximum of 41×41 grid mesh.

Li *et al.* [18] have used a fourth (Δh^4) order compact scheme which had a faster convergence than that of Gupta [15]. They have solved the cavity flow with a grid size of 129×129 for $Re \leq 7500$.

Bruneau and Jouron [7] have solved the N–S equations in primitive variables using a full multigrid-full approximation storage (FMG-FAS) method. With a grid size 256×256 , they have obtained steady solutions for $Re \leq 5000$.

Grigoriev and Dargush [14] have presented a BEM solution with improved penalty function technique using hexagonal subregions and they have discretized the integral equation for each subregion as in FEM. They have used a non-uniform mesh of 5040 quadrilateral cells. With this they were able to solve driven cavity flow up to $Re = 5000$.

Aydin and Fenner [1] have used BEM formulation with using central and upwind finite difference scheme for the convective terms. They have stated that their formulation lost its reliability for Reynolds numbers greater than 1000.

To the authors best knowledge, in all these studies among with other numerous papers found in the literature, the maximum Reynolds number achieved for the *2-D steady incompressible* flow in a lid-driven cavity is $Re = 12\,500$ and is reported by Barragy and Carey [2]. Although Barragy and Carey [2] have presented solutions for $Re = 16\,000$, their solution for this Reynolds number display oscillations related to boundary layer resolution issues due to a coarse mesh. Nallasamy and Prasad [21] have presented steady solutions for Reynolds numbers up to $Re \leq 50\,000$, however, their solutions are believed to be inaccurate as a result of excessive numerical dissipation caused by their first order upwind difference scheme.

A very brief discussion on computational as well as experimental studies on the lid-driven cavity flow can be found in Shankar and Deshpande [27].

Many factors affect the accuracy of a numerical solution, such as, the number of grids in the computational mesh (Δh), and the spatial discretization order of the finite difference equations, and also the boundary conditions used in the solution.

It is an obvious statement that as the number of grids in a mesh is increased (smaller Δh) a numerical solution gets more accurate. In this study the effect of number of grid points in a mesh on the accuracy of the numerical solution of driven cavity flow is investigated, especially as the Reynolds number increases. For this, the governing N–S equations are solved on progressively increasing number of grid points (from 128×128 to 600×600) and the solutions are compared with the highly accurate benchmark solutions found in the literature.

Order of spatial discretization is another factor on the accuracy of a numerical solution. Finite element and spectral methods provide high spatial accuracy. This study also investigates the effect of spacial accuracy on the numerical solution of driven cavity flow. For this, following [26], repeated Richardson extrapolation is used and then the extrapolated results are compared with the benchmark solutions.

Another factor on the accuracy of a numerical solution is the type and the order of the numerical boundary conditions used in computation. For driven cavity flow, this subject was briefly discussed by Weinan and Jian-Guo [32], Spatz [28], Napolitano *et al.* [35] and also by Gupta and Manohar [16].

Until Barragy and Carey [2], many studies have presented steady solutions of driven cavity flow for $Re = 10\,000$ [5, 12, 20, 26]. They [2] have presented solutions for $Re = 12\,500$. In all these studies that have presented high Reynolds number numerical solutions, the largest grid size used was 256×256 . In this study, the grid size will be increased up to 600×600 and the effect of the grid size on the largest computable Reynolds number solution of the driven cavity flow will be investigated.

This paper presents accurate, very fine grid (600×600) numerical solutions of 2-D steady incompressible flow in a lid-driven cavity for Reynolds numbers up to $Re = 21\,000$. A detailed comparisons of our results with mainly the studies mentioned above as well as with other studies not mentioned here, will be done.

2. NUMERICAL METHOD

For two-dimensional and axi-symmetric flows it is convenient to use the streamfunction (ψ) and vorticity (ω) formulation of the Navier–Stokes equations. In non-dimensional form, they are given as

$$\frac{\partial^2 \psi}{\partial x^2} + \frac{\partial^2 \psi}{\partial y^2} = -\omega \quad (1)$$

$$\frac{1}{Re} \left(\frac{\partial^2 \omega}{\partial x^2} + \frac{\partial^2 \omega}{\partial y^2} \right) = \frac{\partial \psi}{\partial y} \frac{\partial \omega}{\partial x} - \frac{\partial \psi}{\partial x} \frac{\partial \omega}{\partial y} \quad (2)$$

where, Re is the Reynolds number, and x and y are the Cartesian coordinates. The N–S equations are nonlinear, and therefore need to be solved in an iterative manner. In order to have an iterative numerical algorithm, pseudo time derivatives are assigned to these Equations (1) and (2) such as

$$\frac{\partial \psi}{\partial t} = \frac{\partial^2 \psi}{\partial x^2} + \frac{\partial^2 \psi}{\partial y^2} + \omega \quad (3)$$

$$\frac{\partial \omega}{\partial t} = \frac{1}{Re} \frac{\partial^2 \omega}{\partial x^2} + \frac{1}{Re} \frac{\partial^2 \omega}{\partial y^2} + \frac{\partial \psi}{\partial x} \frac{\partial \omega}{\partial y} - \frac{\partial \psi}{\partial y} \frac{\partial \omega}{\partial x} \quad (4)$$

Since we are seeking a steady solution, the order of the pseudotime derivatives will not affect the final solution. Therefore, an implicit Euler time step is used for these pseudotime derivatives, which is first order (Δt) accurate. Also for the non-linear terms in the vorticity

equation, a first order (Δt) accurate approximation is used and the governing Equations (3) and (4) are written as follows:

$$\psi^{n+1} - \Delta t \frac{\partial^2 \psi^{n+1}}{\partial x^2} - \Delta t \frac{\partial^2 \psi^{n+1}}{\partial y^2} = \psi^n + \Delta t \omega^n \tag{5}$$

$$\omega^{n+1} - \Delta t \frac{1}{Re} \frac{\partial^2 \omega^{n+1}}{\partial x^2} - \Delta t \frac{1}{Re} \frac{\partial^2 \omega^{n+1}}{\partial y^2} - \Delta t \frac{\partial \psi^n}{\partial x} \frac{\partial \omega^{n+1}}{\partial y} + \Delta t \frac{\partial \psi^n}{\partial y} \frac{\partial \omega^{n+1}}{\partial x} = \omega^n \tag{6}$$

In operator notation the above equations look like the following.

$$\left(1 - \Delta t \frac{\partial^2}{\partial x^2} - \Delta t \frac{\partial^2}{\partial y^2} \right) \psi^{n+1} = \psi^n + \Delta t \omega^n \tag{7}$$

$$\left(1 - \Delta t \frac{1}{Re} \frac{\partial^2}{\partial x^2} - \Delta t \frac{1}{Re} \frac{\partial^2}{\partial y^2} - \Delta t \left(\frac{\partial \psi}{\partial x} \right)^n \frac{\partial}{\partial y} + \Delta t \left(\frac{\partial \psi}{\partial y} \right)^n \frac{\partial}{\partial x} \right) \omega^{n+1} = \omega^n \tag{8}$$

The above equations are in fully implicit form where each equation requires the solution of a large banded matrix which is not computationally efficient. Instead of solving the Equations (7) and (8) in fully implicit form, more efficiently, we spatially factorize the equations, such as

$$\left(1 - \Delta t \frac{\partial^2}{\partial x^2} \right) \left(1 - \Delta t \frac{\partial^2}{\partial y^2} \right) \psi^{n+1} = \psi^n + \Delta t \omega^n \tag{9}$$

$$\left(1 - \Delta t \frac{1}{Re} \frac{\partial^2}{\partial x^2} + \Delta t \left(\frac{\partial \psi}{\partial y} \right)^n \frac{\partial}{\partial x} \right) \left(1 - \Delta t \frac{1}{Re} \frac{\partial^2}{\partial y^2} - \Delta t \left(\frac{\partial \psi}{\partial x} \right)^n \frac{\partial}{\partial y} \right) \omega^{n+1} = \omega^n \tag{10}$$

Here, we split the single LHS operators into two operators, where each only contains derivatives in one direction. The only difference between Equations (7) and (8) and (9) and (10) are the Δt^2 terms produced by the factorization. The advantage of this process is that each equation now requires the solution of a tridiagonal system, which is numerically more efficient.

As the solution converges to the steady state solution, the Δt^2 terms due to the factorization will not become zero and will remain in the solution. To illustrate this, Equation (9) can be written in explicit form as

$$\psi^{n+1} - \Delta t \frac{\partial^2 \psi^{n+1}}{\partial x^2} - \Delta t \frac{\partial^2 \psi^{n+1}}{\partial y^2} + \Delta t^2 \frac{\partial^4 \psi^{n+1}}{\partial x^2 \partial y^2} = \psi^n + \Delta t \omega^n \tag{11}$$

As the solution converges to a steady state, Ψ^{n+1} becomes equal to Ψ^n and they cancel each other from the above equation and at convergence, Equation (11) therefore appears as the following

$$\frac{\partial^2 \psi}{\partial x^2} + \frac{\partial^2 \psi}{\partial y^2} + \omega = - \Delta t \frac{\partial^4 \psi}{\partial x^2 \partial y^2} \tag{12}$$

In Equation (12), there is no guarantee that the RHS, which is the consequence of the factorization, will be small. Only a very small time step (Δt) will ensure that the RHS of Equation (12) will be close to zero. This, however, will slow down the convergence. In addition, the product may not be small since $\partial^4 \psi / \partial x^2 \partial y^2$ can be $\mathcal{O}[1/\Delta t]$ or higher in many flow situations.

In order to overcome this problem, we add a similar term at the previous time level to the RHS of Equation (11) to give the following finite difference form:

$$\psi^{n+1} - \Delta t \frac{\partial^2 \psi^{n+1}}{\partial x^2} - \Delta t \frac{\partial^2 \psi^{n+1}}{\partial y^2} + \Delta t^2 \frac{\partial^4 \psi^{n+1}}{\partial x^2 \partial y^2} = \psi^n + \Delta t \omega^n + \Delta t^2 \frac{\partial^4 \psi^n}{\partial x^2 \partial y^2} \quad (13)$$

As a result, at steady state, ψ^{n+1} converges to ψ^n and $\partial^4 \psi^{n+1} / \partial x^2 \partial y^2$ converges to $\partial^4 \psi^n / \partial x^2 \partial y^2$, so that they cancel each out, and the final solution converges to the correct physical form

$$\frac{\partial^2 \psi}{\partial x^2} + \frac{\partial^2 \psi}{\partial y^2} + \omega = 0 \quad (14)$$

We would like to emphasize that the added Δt^2 term on the RHS is not an artificial numerical diffusion term. Such terms are often used to stabilize the numerical schemes so that convergence can be achieved. Here, the added Δt^2 term on the RHS is not meant to stabilize the numerical scheme. The only reason for this approach is to cancel out the terms introduced by factorization so that the equations are the correct physical representation at the steady state.

One of the most popular spatially factorized schemes is undoubtedly the Beam and Warming [4] method. In that method, the equations are formulated in delta (Δ) form. The main advantage of a delta formulation in a steady problem is that there will be no second order (Δt^2) terms due to the factorization in the solution at the steady state. However in our formulation the second order (Δt^2) terms due to factorization will remain even at the steady state. Adding a second order (Δt^2) term to the RHS of the equations to cancel out the terms produced by factorization, easily overcomes this problem. One of the main differences between the presented formulation and a delta formulation is in the numerical treatment of the vorticity equation. In a delta formulation of the vorticity equation, there appears Δt order convection and dissipation terms on the RHS (explicit side) of the numerical equations. In the presented formulation, on the RHS of the equation there are no Δt order terms. Instead cross derivative terms ($\partial^4 / \partial x^2 \partial y^2$, $\partial^3 / \partial x^2 \partial y$, $\partial^3 / \partial x \partial y^2$, and $\partial^2 / \partial x \partial y$) appear on the RHS. Note that these terms are Δt^2 order. Since Δt is small, these Δt^2 terms are even smaller. Our extensive numerical tests showed that this approach has better numerical stability characteristics and is more effective especially at high Reynolds numbers compared to a delta formulation of the steady streamfunction and vorticity equations.

Applying the approach of removing second order terms due to factorization on the RHS, to both Equations (9) and (10), the final form of the numerical formulation we used for the solution of streamfunction and vorticity equation becomes

$$\left(1 - \Delta t \frac{\partial^2}{\partial x^2}\right) \left(1 - \Delta t \frac{\partial^2}{\partial y^2}\right) \psi^{n+1} = \psi^n + \Delta t \omega^n + \left(\Delta t \frac{\partial^2}{\partial x^2}\right) \left(\Delta t \frac{\partial^2}{\partial y^2}\right) \psi^n \quad (15)$$

$$\begin{aligned} & \left(1 - \Delta t \frac{1}{Re} \frac{\partial^2}{\partial x^2} + \Delta t \left(\frac{\partial \psi}{\partial y}\right)^n \frac{\partial}{\partial x}\right) \left(1 - \Delta t \frac{1}{Re} \frac{\partial^2}{\partial y^2} - \Delta t \left(\frac{\partial \psi}{\partial x}\right)^n \frac{\partial}{\partial y}\right) \omega^{n+1} \\ & = \omega^n + \left(\Delta t \frac{1}{Re} \frac{\partial^2}{\partial x^2} - \Delta t \left(\frac{\partial \psi}{\partial y}\right)^n \frac{\partial}{\partial x}\right) \left(\Delta t \frac{1}{Re} \frac{\partial^2}{\partial y^2} + \Delta t \left(\frac{\partial \psi}{\partial x}\right)^n \frac{\partial}{\partial y}\right) \omega^n \end{aligned} \quad (16)$$

The solution methodology for the two equations involves a two-level updating. First the streamfunction equation is solved. For Equation (15), the variable f is introduced such that

$$\left(1 - \Delta t \frac{\partial^2}{\partial y^2}\right) \psi^{n+1} = f \quad (17)$$

and

$$\left(1 - \Delta t \frac{\partial^2}{\partial x^2}\right) f = \psi^n + \Delta t \omega^n + \left(\Delta t \frac{\partial^2}{\partial x^2}\right) \left(\Delta t \frac{\partial^2}{\partial y^2}\right) \psi^n \quad (18)$$

In Equation (18) f is the only unknown. First, this equation is solved for f at each grid point. Following this, the streamfunction variable (ψ) is advanced into the new time level using Equation (17). Next, the vorticity equation is solved. In a similar fashion for Equation (16), the variable g is introduced such that

$$\left(1 - \Delta t \frac{1}{Re} \frac{\partial^2}{\partial y^2} - \Delta t \left(\frac{\partial \psi}{\partial x}\right)^n \frac{\partial}{\partial y}\right) \omega^{n+1} = g \quad (19)$$

and

$$\begin{aligned} \left(1 - \Delta t \frac{1}{Re} \frac{\partial^2}{\partial x^2} + \Delta t \left(\frac{\partial \psi}{\partial y}\right)^n \frac{\partial}{\partial x}\right) g = \omega^n + \left(\Delta t \frac{1}{Re} \frac{\partial^2}{\partial x^2} - \Delta t \left(\frac{\partial \psi}{\partial y}\right)^n \frac{\partial}{\partial x}\right) \\ \times \left(\Delta t \frac{1}{Re} \frac{\partial^2}{\partial y^2} + \Delta t \left(\frac{\partial \psi}{\partial x}\right)^n \frac{\partial}{\partial y}\right) \omega^n \quad (20) \end{aligned}$$

As with f , g is determined at every grid point using Equation (20), then vorticity variable (ω) is advanced into the next time level using Equation (19).

We note that, in this numerical approach the streamfunction and vorticity equations are solved separately. Each equation is advanced into a next time level by solving two tridiagonal systems, which allows the use of very large grid sizes easily. The method proved to be very effective on flow problems that require high accuracy on very fine grid meshes [9, 10].

3. RESULTS AND DISCUSSION

The boundary conditions and a schematics of the vortices generated in a driven cavity flow are shown in Figure 1. In this figure, the abbreviations BR, BL and TL refer to bottom right, bottom left and top left corners of the cavity, respectively. The number following these abbreviations refer to the vortices that appear in the flow, which are numbered according to size.

We have used the well-known Thom's formula [30] for the wall boundary condition, such that

$$\begin{aligned} \psi_0 &= 0 \\ \omega_0 &= \frac{-2\psi_1}{\Delta h^2} - \frac{2U}{\Delta h} \quad (21) \end{aligned}$$

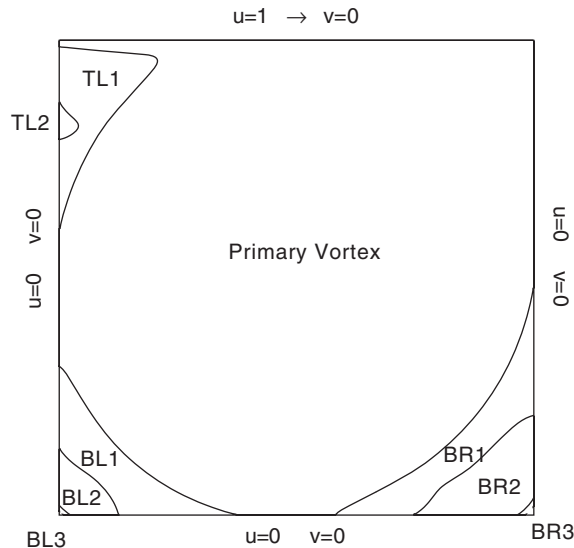


Figure 1. Schematic view of driven cavity flow.

where subscript 0 refers to points on the wall and 1 refers to points adjacent to the wall, Δh refers to grid spacing and U refers to the velocity of the wall with being equal to 1 on the moving wall and 0 on the stationary walls.

We note that, it is well understood [28, 32, 35, 36] that, even though Thom's method is locally first order accurate, the global solution obtained using Thom's method preserves second order accuracy. Therefore in this study, since three point second order central difference is used inside the cavity and Thom's method is used at the wall boundary conditions, the presented solutions are second order accurate.

During our computations we monitored the residual of the steady streamfunction and vorticity Equations (1) and (2) as a measure of the convergence to the steady state solution, where the residual of each equation is given as

$$R_\psi = \frac{\psi_{i-1,j}^{n+1} - 2\psi_{i,j}^{n+1} + \psi_{i+1,j}^{n+1}}{\Delta x^2} + \frac{\psi_{i,j-1}^{n+1} - 2\psi_{i,j}^{n+1} + \psi_{i,j+1}^{n+1}}{\Delta y^2} + \omega_{i,j}^{n+1} \quad (22)$$

$$R_\omega = \frac{1}{Re} \frac{\omega_{i-1,j}^{n+1} - 2\omega_{i,j}^{n+1} + \omega_{i+1,j}^{n+1}}{\Delta x^2} + \frac{1}{Re} \frac{\omega_{i,j-1}^{n+1} - 2\omega_{i,j}^{n+1} + \omega_{i,j+1}^{n+1}}{\Delta y^2} - \frac{\psi_{i,j+1}^{n+1} - \psi_{i,j-1}^{n+1}}{2\Delta y} \frac{\omega_{i+1,j}^{n+1} - \omega_{i-1,j}^{n+1}}{2\Delta x} + \frac{\psi_{i+1,j}^{n+1} - \psi_{i-1,j}^{n+1}}{2\Delta x} \frac{\omega_{i,j+1}^{n+1} - \omega_{i,j-1}^{n+1}}{2\Delta y} \quad (23)$$

The magnitude of these residuals is an indication of the degree to which the solution has converged to steady state. In the limit these residuals would be zero. In our computations, for all Reynolds numbers, we considered that convergence was achieved when for each Equations (22) and (23) the maximum of the absolute residual in the computational domain ($\max(|R_\psi|)$)

Table I. Comparison of the properties of the primary vortex; the maximum streamfunction value, the vorticity value and the location of the centre, for $Re = 1000$.

Reference	No	Grid	Spatial accuracy	ψ	ω	x	y
Present		401×401	Δh^2	0.118585	2.062761	0.5300	0.5650
Present		513×513	Δh^2	0.118722	2.064765	0.5313	0.5645
Present		601×601	Δh^2	0.118781	2.065530	0.5300	0.5650
Present		Extrapolated	Δh^6	<u>0.118942</u>	<u>2.067213</u>	—	—
Barragy and Carey	Reference [2]	257×257	$p = 8$	<u>0.118930</u>	—	—	—
Botella and Peyret	Reference [6]	$N = 128$	$N = 128$	<u>0.1189366</u>	<u>2.067750</u>	0.5308	0.5652
Botella and Peyret	Reference [6]	$N = 160$	$N = 160$	<u>0.1189366</u>	<u>2.067753</u>	0.5308	0.5652
Schreiber and Keller	Reference [26]	100×100	Δh^2	0.11315	1.9863	—	—
Schreiber and Keller	Reference [26]	121×121	Δh^2	0.11492	2.0112	—	—
Schreiber and Keller	Reference [26]	141×141	Δh^2	0.11603	2.0268	0.52857	0.56429
Schreiber and Keller	Reference [26]	Extrapolated	Δh^6	<u>0.11894</u>	<u>2.0677</u>	—	—
Wright and Gaskell	Reference [34]	1024×1024	Δh^2	<u>0.118821</u>	<u>2.06337</u>	0.5308	0.5659
Nishida and Satofuka	Reference [22]	129×129	Δh^8	<u>0.119004</u>	<u>2.068546</u>	0.5313	0.5625
Benjamin and Denny	Reference [5]	101×101	Δh^2	0.1175	2.044	—	—
Benjamin and Denny	Reference [5]	Extrapolated	High order	<u>0.1193</u>	<u>2.078</u>	—	—
Li <i>et al.</i>	Reference [18]	129×129	Δh^4	0.118448	2.05876	0.5313	0.5625
Ghia <i>et al.</i>	Reference [12]	129×129	Δh^2	0.117929	2.04968	0.5313	0.5625
Bruneau and Jouron	Reference [7]	256×256	Δh^2	0.1163	—	0.5313	0.5586
Goyon	Reference [13]	129×129	Δh^2	0.1157	—	0.5312	0.5625
Vanka	Reference [31]	321×321	Δh^2	0.1173	—	0.5438	0.5625
Gupta	Reference [15]	41×41	Δh^4	0.111492	2.02763	0.525	0.575
Hou <i>et al.</i>	Reference [17]	256×256	Δh^2	0.1178	2.0760	0.5333	0.5647
Liao and Zhu	Reference [20]	129×129	Δh^2	0.1160	2.0234	0.5313	0.5625
Grigoriev and Dargush	Reference [14]	—	—	0.11925	—	0.531	0.566

and $\max(|R_\omega|)$ was less than 10^{-10} . Such a low value was chosen to ensure the accuracy of the solution. At these residual levels, the maximum absolute difference in streamfunction value between two time steps, ($\max(|\psi^{n+1} - \psi^n|)$), was in the order of 10^{-16} and for vorticity, ($\max(|\omega^{n+1} - \omega^n|)$), it was in the order of 10^{-14} . And also at these convergence levels, between two time steps the maximum absolute normalized difference in streamfunction, ($\max(|(\psi^{n+1} - \psi^n)/\psi^n|)$), and in vorticity, ($\max(|(\omega^{n+1} - \omega^n)/\omega^n|)$), were in the order of 10^{-13} , and 10^{-12} respectively.

We have started our computations by solving the driven cavity flow from $R = 1000$ to $Re = 5000$ on a 129×129 grid mesh. With using this many number of grids, we could not get a steady solution for $Re = 7500$. The first natural conclusion was that the cavity flow may not be steady at $Re = 7500$, and therefore steady solution may not be computable. Even though we have used a pseudo-time iteration, the time evolution of the flow parameters, either vorticity or streamfunction values at certain locations, were periodic suggesting that the flow indeed may be periodic, backing up this conclusion. Besides, in the literature many studies claim that the driven cavity flow becomes unstable between a Reynolds number of 7000 and 8000, for example, Peng *et al.* [23], Fortin *et al.* [11] and Poliashenko and Aidun [24] predict unstable flow beyond Re of 7402, 7998.5 and 7763, respectively. However, on the

Table II. Richardson extrapolation for streamfunction values at the primary vortex.

Re	Grid	$\psi \mathcal{O}(\Delta h^2)$	$\psi \mathcal{O}(\Delta h^4)$	$\psi \mathcal{O}(\Delta h^6)$
1000	401×401	-0.118585		
	513×513	-0.118722	-0.118937	
	601×601	-0.118781	-0.118939	-0.118942
2500	401×401	-0.120493		
	513×513	-0.120873	-0.121468	
	601×601	-0.121035	-0.121469	-0.121470
5000	401×401	-0.120145		
	513×513	-0.120944	-0.122196	
	601×601	-0.121289	-0.122213	-0.122233
7500	401×401	-0.119178		
	513×513	-0.120395	-0.122301	
	601×601	-0.120924	-0.122341	-0.122386
10 000	401×401	-0.118059		
	513×513	-0.119690	-0.122245	
	601×601	-0.120403	-0.122313	-0.122390
12 500	401×401	-0.116889		
	513×513	-0.118936	-0.122142	
	601×601	-0.119831	-0.122229	-0.122326
15 000	401×401	-0.115701		
	513×513	-0.118162	-0.122017	
	601×601	-0.119239	-0.122124	-0.122245
17 500	401×401	-0.114507		
	513×513	-0.117381	-0.121883	
	601×601	-0.118641	-0.122016	-0.122167
20 000	401×401	-0.113313		
	513×513	-0.116596	-0.121739	
	601×601	-0.118038	-0.121901	-0.122084
21 000	401×401	-0.112837		
	513×513	-0.116282	-0.121678	
	601×601	-0.117797	-0.121855	-0.122056

other hand there were many studies [2, 5, 12, 20, 26] that have presented solutions for a higher Reynolds number, $Re = 10\,000$. This was contradictory. We then have tried to solve the same case, $Re = 7500$, with a larger grid size of 257×257 . This time we were able to obtain a steady solution. In fact, with 257×257 number of grids, we carry our steady computations up to $Re = 12\,500$. Barragy and Carey [2] have also presented steady solutions for $Re = 12\,500$. Interesting point was, when we tried to increase Re furthermore with the same grid mesh, we have again obtained a periodic behaviour. Once again the natural conclusion was that the steady solutions beyond this Re may not be computable. Having concluded this, we could not help but ask the question what happens if we increase the number of grids furthermore. In their study Barragy and Carey [2] have presented a steady solution for $Re = 16\,000$. Their solution for this Reynolds number displayed oscillations. They concluded that this was due to a coarse mesh. This conclusion encouraged us to use larger grid size than 257×257 in

Table III. Richardson extrapolation for vorticity values at the primary vortex.

Re	Grid	$\omega \mathcal{O}(\Delta h^2)$	$\omega \mathcal{O}(\Delta h^4)$	$\omega \mathcal{O}(\Delta h^6)$
1000	401 × 401	-2.062761		
	513 × 513	-2.064765	-2.067904	
	601 × 601	-2.065530	-2.067579	-2.067213
2500	401 × 401	-1.961660		
	513 × 513	-1.967278	-1.976078	
	601 × 601	-1.969675	-1.976096	-1.976117
5000	401 × 401	-1.909448		
	513 × 513	-1.921431	-1.940201	
	601 × 601	-1.926601	-1.940451	-1.940732
7500	401 × 401	-1.878523		
	513 × 513	-1.896895	-1.925673	
	601 × 601	-1.904883	-1.926282	-1.926969
10 000	401 × 401	-1.853444		
	513 × 513	-1.878187	-1.916945	
	601 × 601	-1.888987	-1.917919	-1.919018
12 500	401 × 401	-1.830890		
	513 × 513	-1.862010	-1.910757	
	601 × 601	-1.875618	-1.912072	-1.913557
15 000	401 × 401	-1.809697		
	513 × 513	-1.847199	-1.905943	
	601 × 601	-1.863618	-1.907602	-1.909476
17 500	401 × 401	-1.789348		
	513 × 513	-1.833212	-1.901921	
	601 × 601	-1.852447	-1.903975	-1.906294
20 000	401 × 401	-1.769594		
	513 × 513	-1.819761	-1.898343	
	601 × 601	-1.841814	-1.900891	-1.903767
21 000	401 × 401	-1.761828		
	513 × 513	-1.814492	-1.896986	
	601 × 601	-1.837672	-1.899768	-1.902909

order to obtain solutions for Reynolds numbers greater than 12 500. At this point, since the focus was on the number of grids, we realized that among the studies that presented steady solutions at very high Reynolds numbers [2, 5, 12, 20, 26], the maximum number of grids used was 257×257 . Larger grid sizes have not been used at these high Reynolds numbers. This was also encouraging us to use more grid points. We, then, decided to increase the number of grids and tried to solve for $Re = 15\,000$ with 401×401 number of grids. This time we were able to obtain a steady solution. This fact suggests that in order to obtain a numerical solution for 2-D steady incompressible driven cavity flow for $Re \geq 12\,500$, a grid mesh with more than 257×257 grid points is needed. With using 401×401 grid points, we continued our steady computations up to $Re = 21\,000$. Beyond this Re our computations again displayed a periodic behaviour. This time the first natural thing came to mind was to increase the

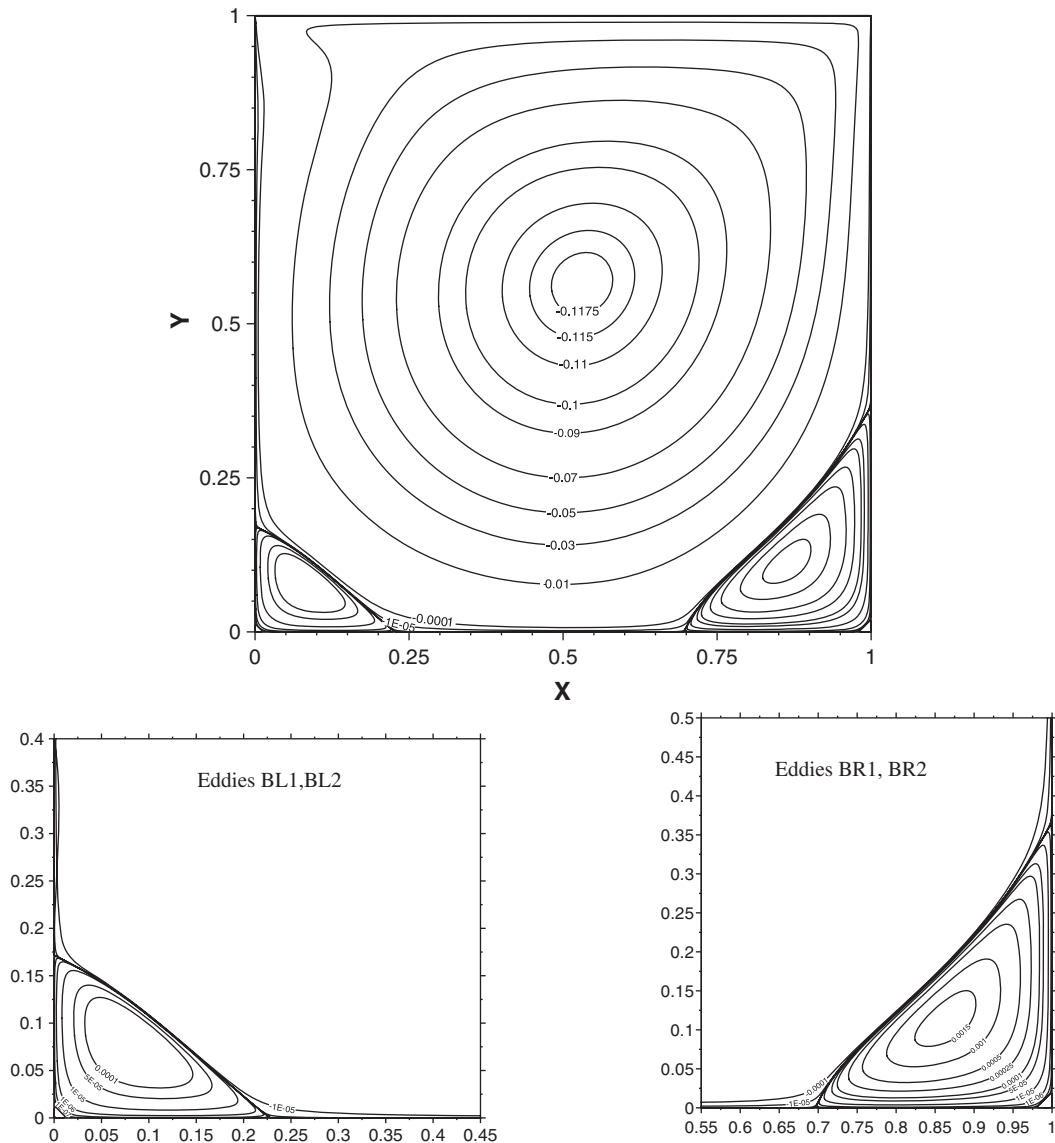


Figure 2. Streamline contours of primary and secondary vortices, $Re = 1000$.

number of grids. We have tried to use 513×513 grids, however again we could not get a steady solution beyond $Re = 21\,000$. Thinking that the increase in number of grids may not be enough, we then again increased the number of grids and have used 601×601 grids. The situation was the same, and the maximum Reynolds number that we can obtain a steady solution with using 601×601 grids was $Re = 21\,000$. We did not try to increase the number of grids furthermore since the computations became time consuming. Whether or not steady

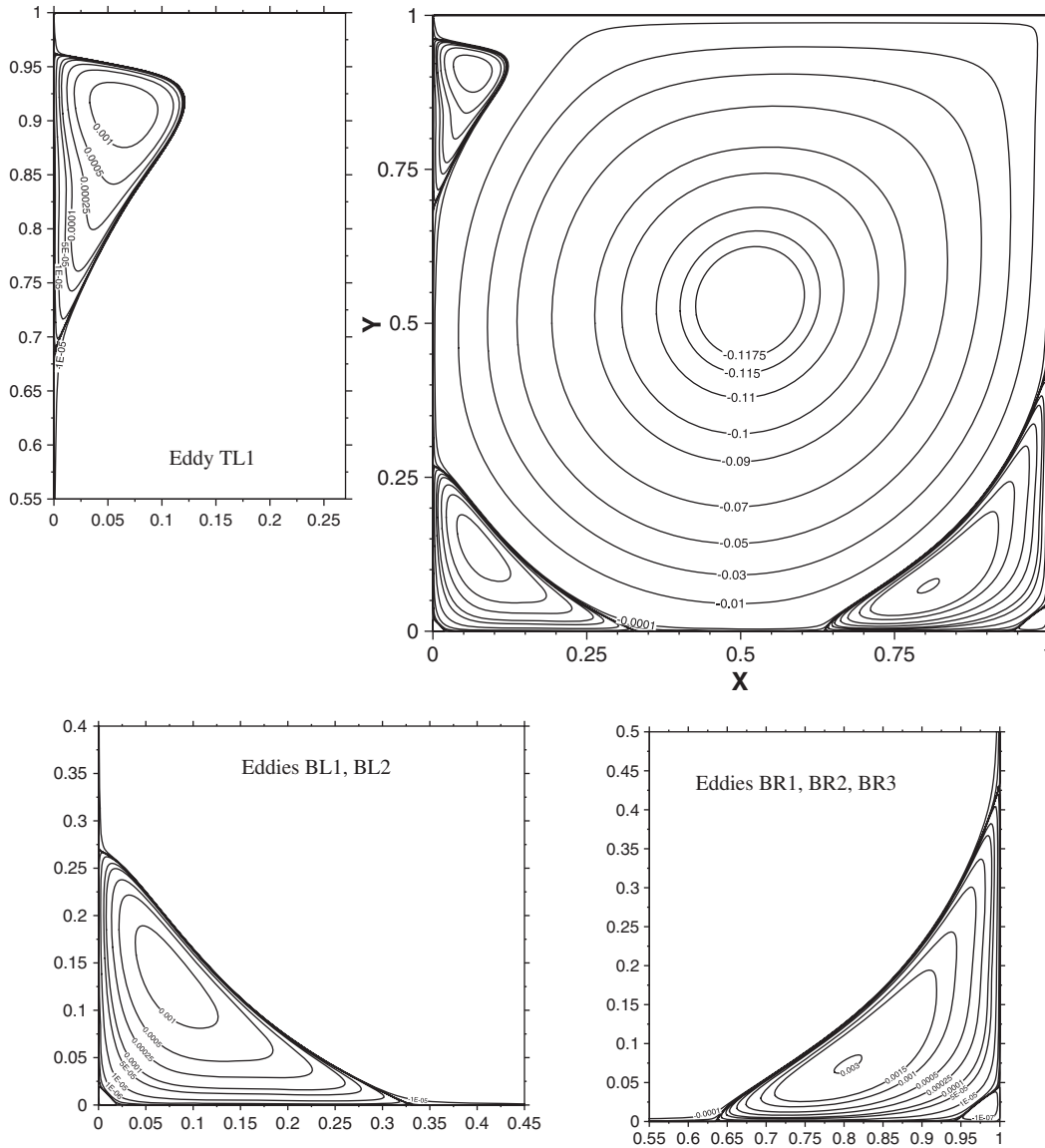


Figure 3. Streamline contours of primary and secondary vortices, $Re = 5000$.

computations of driven cavity flow are possible beyond $Re = 21\,000$ with grid numbers larger than 601×601 , is still an open question.

One of the reasons, why the steady solutions of the driven cavity flow at very high Reynolds numbers become computable when finer grids are used, may be the fact that as the number of grids used increases, Δh gets smaller, then the cell Reynolds number or so called Peclet number defined as $Re_c = u\Delta h/\nu$ decreases. This improves the numerical stability characteristics

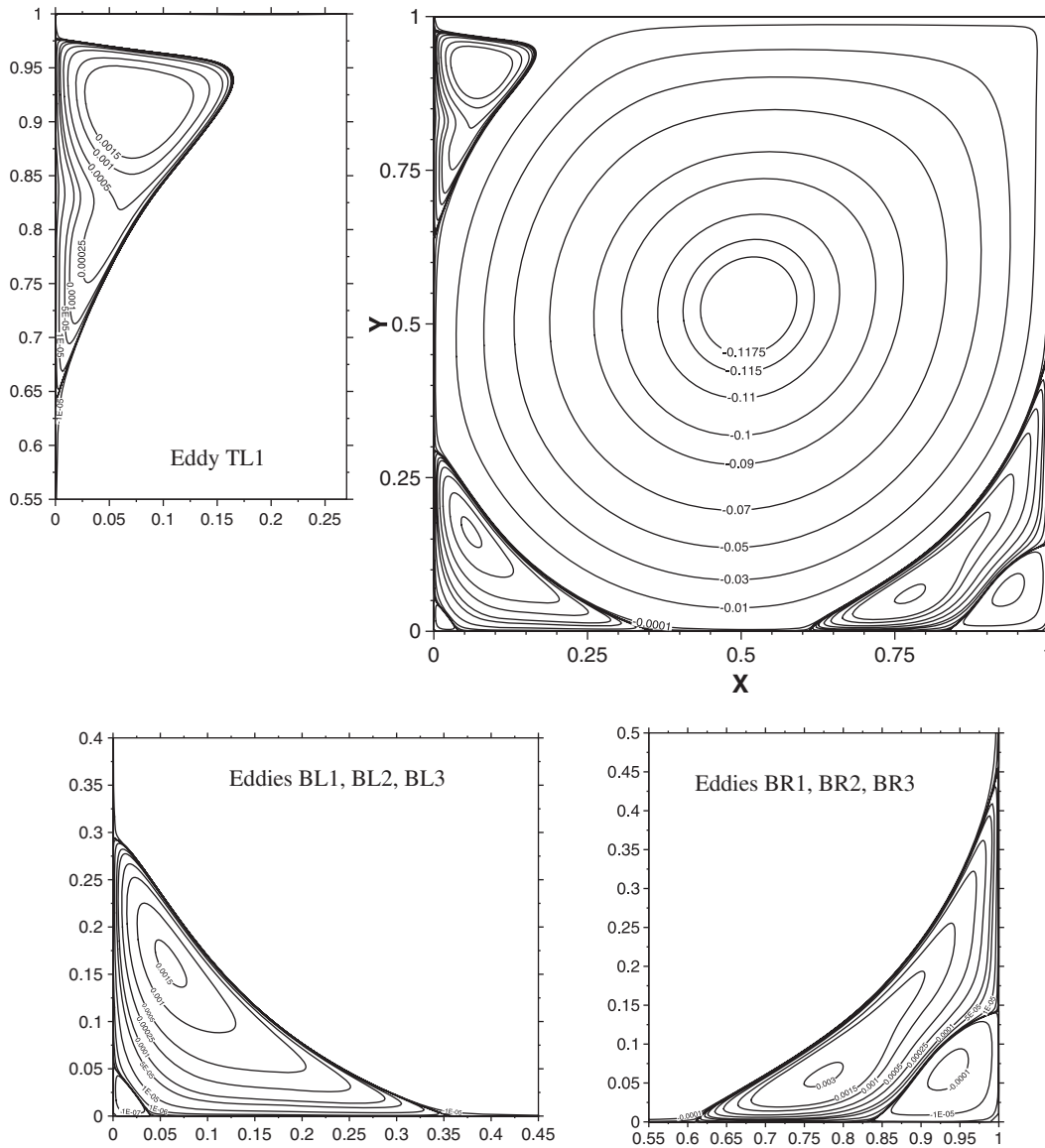


Figure 4. Streamline contours of primary and secondary vortices, $Re = 10000$.

of the numerical scheme used [29, 32], and allows high cavity Reynolds numbered solutions computable. Another reason may be that fact that finer grids would resolve the corner vortices better. This would, then, help decrease any numerical oscillations that might occur at the corners of the cavity during iterations.

We note that all the figures and tables present the solution of the finest grid size of 601×601 unless otherwise stated.

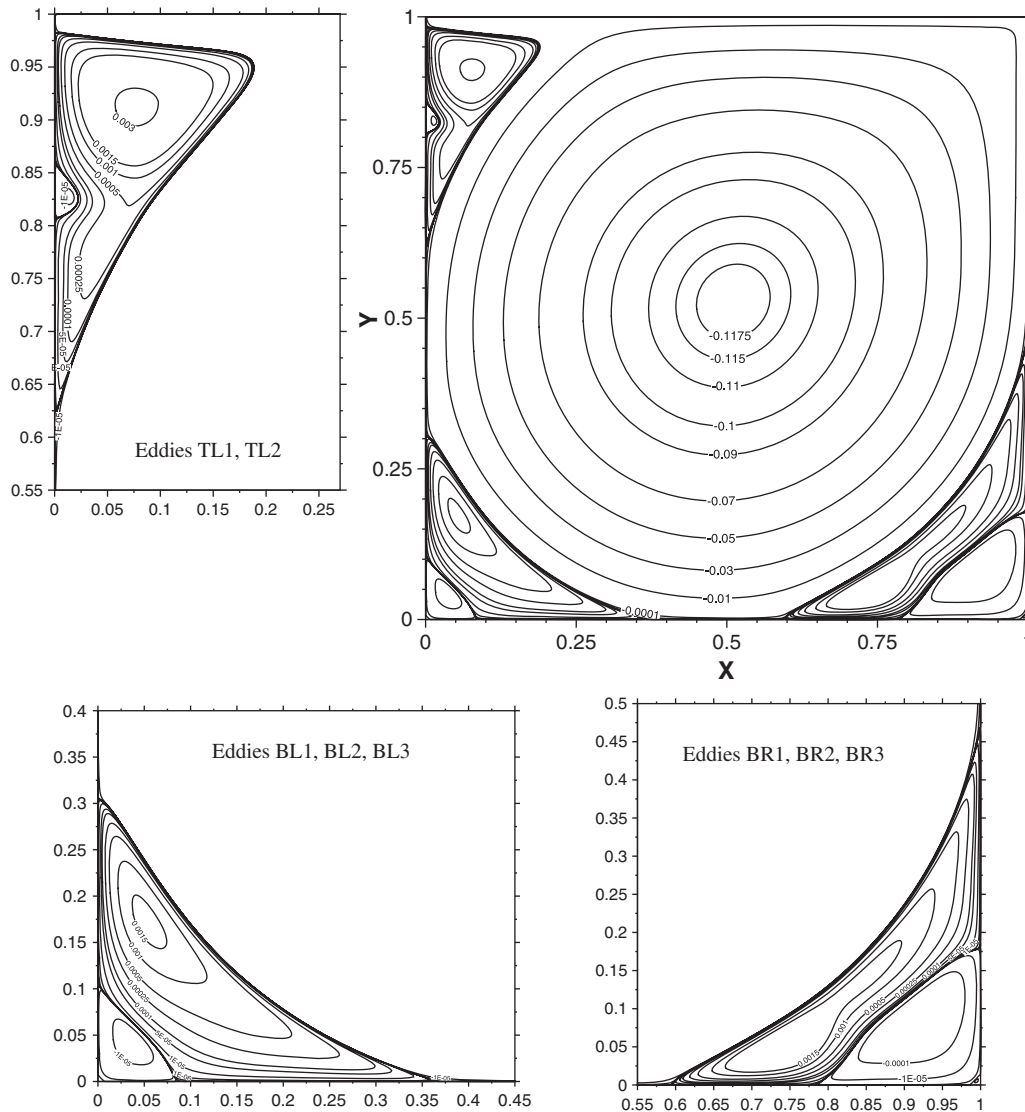


Figure 5. Streamline contours of primary and secondary vortices, $Re = 15000$.

The accuracy of a finite difference solution is set by the mesh size, and by the spatial order of the finite difference equations and the boundary approximations. At low Reynolds numbers ($Re = 1000$), different numerical method solutions found in the literature agree with each other. However, the solutions at higher Reynolds numbers ($Re > 1000$) have noticeable discrepancies. We believe it is mainly due to different spatial orders and different grid mesh sizes and different boundary conditions used in different studies.

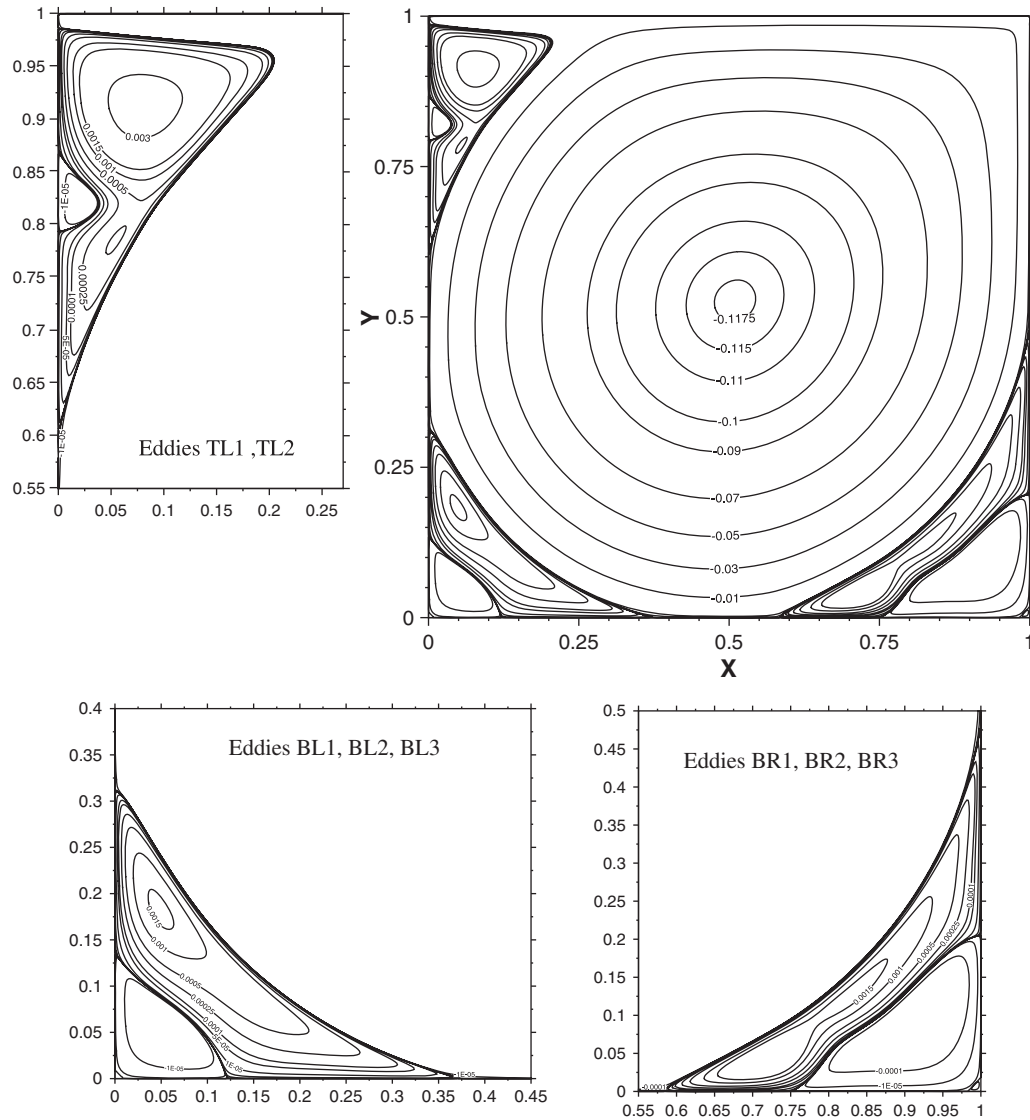


Figure 6. Streamline contours of primary and secondary vortices, $Re = 20000$.

Table I tabulates the minimum streamfunction value, the vorticity value at the centre of the primary vortex and also the centre location of the primary vortex for $Re = 1000$ along with similar results found in the literature with the most significant ones are underlined. In Table I among the most significant (underlined) results, Schreiber and Keller [26] have used Richardson extrapolation in order to achieve high spatial accuracy. For $Re = 1000$ their extrapolated solutions are Δh^6 order accurate and these solutions are obtained by using repeated Richardson extrapolation on three different mesh size solutions.

Table IV. Comparison of the minimum streamfunction value, the vorticity value at the centre of the primary vortex for various Reynolds numbers.

		<i>Re</i>				
		2500	5000	7500	10 000	12 500
Present	ψ	-0.121470	-0.122233	-0.122386	-0.122390	-0.122326
	ω	-1.976117	-1.940732	-1.926969	-1.919018	-1.913557
Barragy and Carey	Reference [2] ψ	-0.1214621	-0.122219	-0.1223803	-0.1223930	-0.1223584
	ω	—	—	—	—	—
Schreiber and Keller	Reference [26] ψ	—	—	—	-0.12292	—
	ω	—	—	—	-1.9263	—
Li <i>et al.</i>	Reference [18] ψ	—	-0.120359	-0.1193791	—	—
	ω	—	-1.92430	-1.91950	—	—
Benjamin and Denny	Reference [5] ψ	—	—	—	-0.1212	—
	ω	—	—	—	—	—
Ghia <i>et al.</i>	Reference [12] ψ	—	-0.118966	-0.119976	-0.119731	—
	ω	—	-1.86016	-1.87987	-1.88082	—
Liao and Zhu	Reference [20] ψ	—	-0.1186	-0.1201	-0.1201	—
	ω	—	-1.9375	-1.9630	-1.9426	—
Hou <i>et al.</i>	Reference [17] ψ	—	-0.1214	-0.1217	—	—
	ω	—	—	—	—	—
Grigoriev and Dargush	Reference [14] ψ	—	-0.12209	—	—	—
	ω	—	—	—	—	—

Following the same approach, we have solved the cavity flow on three different grid mesh (401×401 , 513×513 and 601×601) separately for every Reynolds number ($Re = 1000$ – $21\,000$). Since the numerical solution is second order accurate, the computed values of streamfunction and vorticity have an asymptotic error expansion of the form

$$\begin{aligned}\psi(x_i, y_j) &= \psi_{i,j} + c_1 \Delta h^2 + c_2 \Delta h^4 + \dots \\ \omega(x_i, y_j) &= \omega_{i,j} + d_1 \Delta h^2 + d_2 \Delta h^4 + \dots\end{aligned}\quad (24)$$

We can use Richardson extrapolation in order to obtain high-order accurate approximations [26]. We have used repeated Richardson extrapolations using the three different mesh size solutions. The extrapolated values of the streamfunction and the vorticity at the centre of the primary vortex are given in Tables II and III, respectively. The extrapolated results tabulated in Tables II and III are, in theory, Δh^6 order accurate.

Looking back to Table I, for $Re = 1000$, our extrapolated results are in very good agreement with the extrapolated results of Schreiber and Keller [26]. In fact our extrapolated streamfunction value at the primary vortex differs only 0.013% and the vorticity value differs only 0.095% from the extrapolated results of Schreiber and Keller [26].

With spectral methods, very high spatial accuracy can be obtained with a relatively smaller number of grid points. For this reason, the tabulated results from Botella and Peyret [6] are believed to be very accurate. Our results are also in very good agreement such that our extrapolated results differs 0.016% in the streamfunction value and 0.098% in the vorticity value from the results of Botella and Peyret [6].

Table V. Properties of primary and secondary vortices; streamfunction and vorticity values, (x, y) locations.

		Re									
		1000	2500	5000	7500	10000	12500	15000	17500	20000	21000
Primary vortex	ψ	-0.118781	-0.121035	-0.121289	-0.120924	-0.120403	-0.119831	-0.119240	-0.118641	-0.118039	-0.117797
	ω	-2.065530	-1.969675	-1.926601	-1.904883	-1.888987	-1.875618	-1.865618	-1.852447	-1.841814	-1.837672
	(x, y)	(0.5300, 0.5650)	(0.5200, 0.5433)	(0.5150, 0.5350)	(0.5133, 0.5317)	(0.5117, 0.5300)	(0.5117, 0.5283)	(0.5100, 0.5283)	(0.5100, 0.5267)	(0.5100, 0.5267)	(0.5100, 0.5267)
BR1	ψ	0.17281E-02	0.26561E-02	0.30604E-02	0.32102E-02	0.31758E-02	0.30839E-02	0.29897E-02	0.28938E-02	0.27967E-02	0.27598E-02
	ω	1.115505	1.929029	2.724481	3.215956	3.696991	4.260493	4.837680	5.372747	5.882504	6.080586
	(x, y)	(0.8633, 0.1117)	(0.8350, 0.0917)	(0.8050, 0.0733)	(0.7900, 0.0650)	(0.7767, 0.0600)	(0.7617, 0.0550)	(0.7483, 0.0500)	(0.7367, 0.0467)	(0.7267, 0.0450)	(0.7217, 0.0433)
BL1	ψ	0.23261E-03	0.92541E-03	0.13639E-02	0.15171E-02	0.15930E-02	0.16355E-02	0.16484E-02	0.16331E-02	0.16032E-02	0.15897E-02
	ω	0.353473	0.966506	1.502628	1.838156	2.150847	2.318733	2.441871	2.594288	2.823121	2.877385
	(x, y)	(0.0833, 0.0783)	(0.0850, 0.1100)	(0.0733, 0.1367)	(0.0650, 0.1517)	(0.0583, 0.1633)	(0.0550, 0.1683)	(0.0533, 0.1717)	(0.0517, 0.1750)	(0.0483, 0.1817)	(0.0483, 0.1833)
BR2	ψ	-0.54962E-07	-0.12967E-06	-0.14010E-05	-0.30998E-04	-0.13397E-03	-0.24687E-03	-0.33148E-03	-0.39539E-03	-0.44959E-03	-0.47028E-03
	ω	-0.77076E-02	-0.15959E-01	-0.34108E-01	-0.158392	-0.302615	-0.397507	-0.453339	-0.512637	-0.544236	-0.574871
	(x, y)	(0.9917, 0.0067)	(0.9900, 0.0100)	(0.9783, 0.0183)	(0.9517, 0.0417)	(0.9350, 0.0667)	(0.9283, 0.0817)	(0.9267, 0.0883)	(0.9283, 0.0967)	(0.9300, 0.1033)	(0.9317, 0.1083)
BL2	ψ	-0.84221E-08	-0.32321E-07	-0.72080E-07	-0.20202E-06	-0.10151E-05	-0.57409E-05	-0.20172E-04	-0.44887E-04	-0.74543E-04	-0.86415E-04
	ω	-0.29802E-02	-0.93800E-02	-0.12252E-01	-0.16862E-01	-0.30981E-01	-0.68557E-01	-0.134120	-0.192907	-0.232067	-0.250751
	(x, y)	(0.0050, 0.0050)	(0.0067, 0.0067)	(0.0083, 0.0083)	(0.0117, 0.0117)	(0.0167, 0.0200)	(0.0250, 0.0317)	(0.0367, 0.0417)	(0.0483, 0.0483)	(0.0567, 0.0533)	(0.0600, 0.0550)
TL1	ψ	—	0.34455E-03	0.14416E-02	0.21119E-02	0.25870E-02	0.29394E-02	0.32110E-02	0.34298E-02	0.36105E-02	0.36749E-02
	ω	—	1.321269	2.062775	2.201598	2.296811	2.329198	2.358627	2.380582	2.387858	2.387858
	(x, y)	—	(0.0433, 0.8900)	(0.0633, 0.9100)	(0.0667, 0.9133)	(0.0717, 0.9117)	(0.0750, 0.9117)	(0.0767, 0.9117)	(0.0800, 0.9133)	(0.0817, 0.9133)	(0.0817, 0.9133)
BR3	ψ	—	—	0.21562E-09	0.14409E-08	0.51934E-08	0.99032E-08	0.13947E-07	0.19492E-07	0.29610E-07	0.34929E-07
	ω	—	—	0.70828E-03	0.22180E-02	0.25744E-02	0.38075E-02	0.33588E-02	0.43303E-02	0.51574E-02	0.63746E-02
	(x, y)	—	—	(0.9983, 0.0017)	(0.9967, 0.0033)	(0.9967, 0.0050)	(0.9950, 0.0050)	(0.9950, 0.0050)	(0.9950, 0.0067)	(0.9933, 0.0067)	(0.9933, 0.0083)
BL3	ψ	—	—	—	—	0.14382E-09	0.50930E-09	0.11280E-08	0.22898E-08	0.34584E-08	0.37846E-08
	ω	—	—	—	—	0.78229E-03	0.53920E-03	0.10824E-02	0.22499E-02	0.18414E-02	0.17128E-02
	(x, y)	—	—	—	—	(0.0017, 0.0017)	(0.0017, 0.0017)	(0.0017, 0.0033)	(0.0033, 0.0033)	(0.0033, 0.0033)	(0.0033, 0.0033)
TL2	ψ	—	—	—	—	—	-0.12752E-05	-0.13394E-04	-0.36218E-04	-0.63084E-04	-0.74373E-04
	ω	—	—	—	—	—	-0.215534	-0.515658	-0.711567	-0.858460	-0.933479
	(x, y)	—	—	—	—	—	(0.0067, 0.8317)	(0.0150, 0.8267)	(0.0200, 0.8233)	(0.0233, 0.8200)	(0.0250, 0.8200)

Barragy and Carey [2] have only tabulated the location of the vortex centres and the streamfunction values at these locations yet they have not presented any vorticity data. Nevertheless, their solutions based on p -type finite element scheme also have very high spatial accuracy (Δh^8 order accurate). They have presented the maximum Reynolds number solutions ($Re = 12\,500$) for the cavity flow, to the best of our knowledge, found in the literature. We will show that the agreement between our results and results of Barragy and Carey [2] is excellent through the whole Reynolds number range they considered ($1000 \leq Re \leq 12\,500$). Comparing solutions for $Re = 1000$ in Table I, the difference is 0.022% in the streamfunction value.

Wright and Gaskell [34] have used a very fine grid mesh with 1024×1024 grid points in their solutions. With this many grids their solution should be quite accurate. Their streamfunction and vorticity value are very close to our solutions with a difference of 0.113 and 0.114%, respectively.

Nishida and Satofuka [22] have presented higher order solutions in which for $Re = 1000$ their solutions are Δh^8 order accurate. Comparing with our results we find a very good agreement such that our extrapolated results differs 0.040% in streamfunction value and 0.136% in vorticity value.

Grigoriev and Dargush [14] have solved the governing equations with a boundary element method (BEM). They have only tabulated the streamfunction values and the location of the centres of the primary and secondary vortices for driven cavity flow for Reynolds numbers up to 5000. Their solution for $Re = 1000$ is quite accurate.

Benjamin and Denny [5] have used a Δh^n extrapolation to obtain the values when $\Delta h \rightarrow 0$ using the three different grid mesh size solutions. Their extrapolated results are close to other underlined data in Table I. It is quite remarkable that even a simple extrapolation produces such good results.

Hou *et al.* [17] have simulated the cavity flow by the lattice Boltzmann method. They have presented solutions for $Re \leq 7500$ obtained by using 256×256 lattice. However their results have significant oscillations in the two upper corners of the cavity. Especially their vorticity contours have wiggles aligned with lattice directions, for $Re \geq 1000$.

Li *et al.* [18] have used a compact scheme and presented fourth order accurate (Δh^4) results for a 129×129 grid mesh. Ghia *et al.* [12] have used a second order method (Δh^2) with a mesh size of 129×129 . These results, together with that of Goyon [13] and Liao and Zhu [20], might be considered as somewhat under-resolved. Our calculations showed that for a second order (Δh^2) spatial accuracy, even a 401×401 grid mesh solutions can be considered as under-resolved for $Re = 1000$.

The results of Bruneau and Jouron [7] and Vanka [31] appear over-diffusive due to upwind differencing they have used.

From all these comparisons we can conclude that even for $Re = 1000$ higher order approximations together with the use of fine grids are necessary for accuracy.

Figures 2–6 show streamfunction contours of the finest (601×601) grid solutions, for various Reynolds numbers. These figures exhibit the formation of the counter-rotating secondary vortices which appear as the Reynolds number increases.

Table IV compares our computed streamfunction and vorticity values at the centre of the primary vortex with the results found in the literature for various Reynolds numbers. The agreement between our Richardson extrapolated results (Δh^6 order accurate) with results of Barragy and Carey [2] based on p -type finite element scheme (Δh^8 order accurate) is quite remarkable. One interesting result is that the streamfunction value at the centre of the

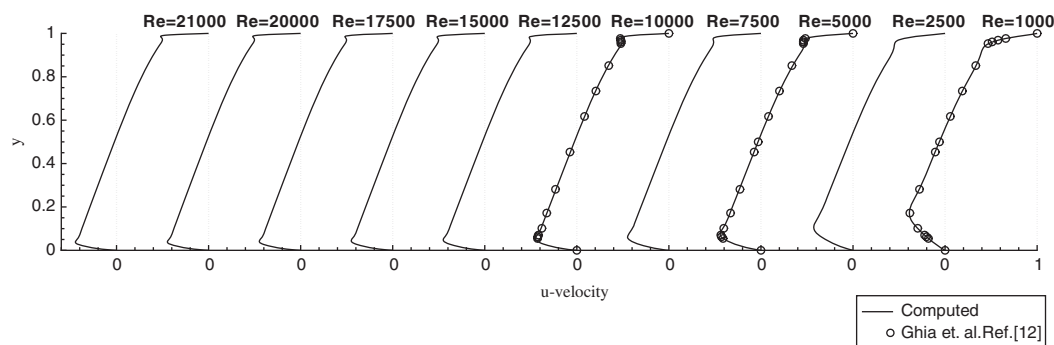


Figure 7. Computed u -velocity profiles along a vertical line passing through the geometric centre of the cavity at various Reynolds numbers.

primary vortex decreases at first as the Reynolds number increases until $Re = 10\,000$, however then starts to increase as the Reynolds number increases further. This behaviour was also documented by Barragy and Carey [2].

In terms of quantitative results, Gupta and Manohar [16], stated that for the numerical solutions of driven cavity flow, the value of the streamfunction (ψ) at the primary vortex centre appears to be a reliable indicator of accuracy, where as the location of the vortex centre (x and y) is limited by the mesh size, and the value of the vorticity (ω) at the vortex centre is sensitive to the accuracy of the wall boundary conditions. Nevertheless, the locations of the primary and secondary vortices, as well as the values of the streamfunction (ψ) and vorticity (ω) at these locations are presented in Table V. These are comparable with the solutions of Barragy and Carey [2] and Ghia *et al.* [12]. It is evident that as the Reynolds number increases, the centre of the primary vortex moves towards the geometric centre of the cavity. Its location is almost invariant for $Re \geq 17\,500$. Our computations indicate the appearance of a quaternary vortex at the bottom left corner (BL3) at Reynolds number of 10 000. We would like to note that, this quaternary vortex (BL3) did not appear in our solutions for $Re = 10\,000$ with grid sizes less than 513×513 . This would suggest that, especially at high Reynolds numbers, in order to resolve the small vortices appear at the corners properly, very fine grids have to be used. Moreover, our solutions indicate another tertiary vortex at the top left side of the cavity (TL2) at $Re = 12\,500$. These vortices (BL3 and TL2) were also observed by Barragy and Carey [2].

Figures 7 and 8 present the u -velocity profiles along a vertical line and the v -velocity profiles along a horizontal line passing through the geometric centre of the cavity respectively and also Tables VI and VII tabulates u - and v -velocity values at certain locations respectively, for future references. These profiles are in good agreement with that of Ghia *et al.* [12] shown by symbols in Figures 7 and 8.

We have solved the incompressible flow in a driven cavity numerically. A very good mathematical check on the accuracy of the numerical solution would be to check the continuity of the fluid, as suggested by Aydin and Fenner [1], although this is done very rarely in driven cavity flow papers. We have integrated the u -velocity and v -velocity profiles, considered in Figures 7 and 8, along a vertical line and horizontal line passing through the geometric centre of the cavity, in order to obtain the net volumetric flow rate, Q , through these sections. Since

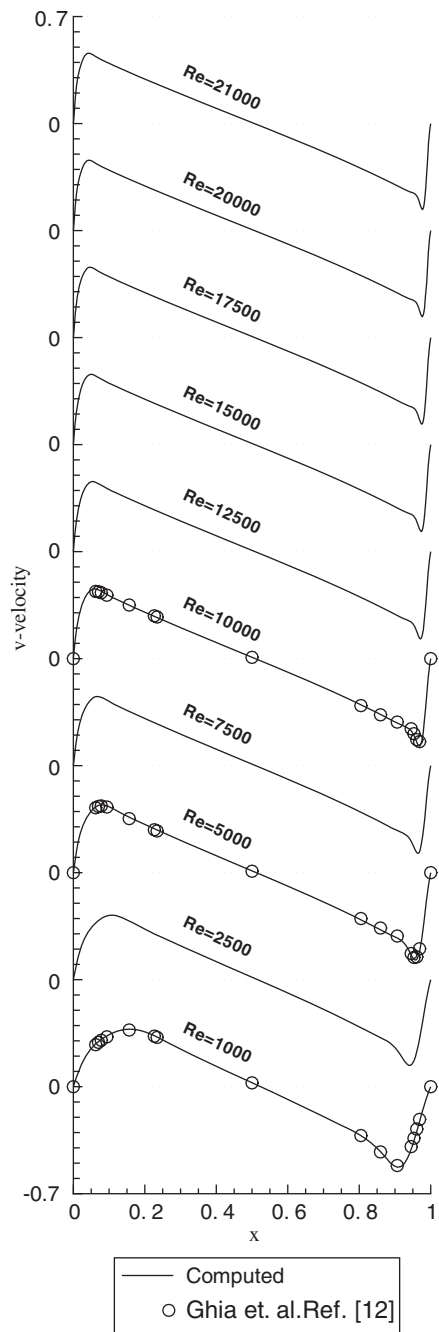


Figure 8. Computed v -velocity profiles along a horizontal line passing through the geometric centre of the cavity at various Reynolds numbers.

Table VI. Tabulated u -velocity profiles along a vertical line passing through the geometric centre of the cavity at various Reynolds numbers.

y	Re									
	1000	2500	5000	7500	10 000	12 500	15 000	17 500	20 000	21 000
1.000	1.0000	1.0000	1.0000	1.0000	1.0000	1.0000	1.0000	1.0000	1.0000	1.0000
0.990	0.8486	0.7704	0.6866	0.6300	0.5891	0.5587	0.5358	0.5183	0.5048	0.5003
0.980	0.7065	0.5924	0.5159	0.4907	0.4837	0.4833	0.4850	0.4871	0.4889	0.4895
0.970	0.5917	0.4971	0.4749	0.4817	0.4891	0.4941	0.4969	0.4982	0.4985	0.4983
0.960	0.5102	0.4607	0.4739	0.4860	0.4917	0.4937	0.4937	0.4925	0.4906	0.4897
0.950	0.4582	0.4506	0.4738	0.4824	0.4843	0.4833	0.4811	0.4784	0.4754	0.4742
0.940	0.4276	0.4470	0.4683	0.4723	0.4711	0.4684	0.4653	0.4622	0.4592	0.4580
0.930	0.4101	0.4424	0.4582	0.4585	0.4556	0.4523	0.4492	0.4463	0.4436	0.4425
0.920	0.3993	0.4353	0.4452	0.4431	0.4398	0.4366	0.4338	0.4312	0.4287	0.4277
0.910	0.3913	0.4256	0.4307	0.4275	0.4243	0.4216	0.4190	0.4166	0.4142	0.4132
0.900	0.3838	0.4141	0.4155	0.4123	0.4095	0.4070	0.4047	0.4024	0.4001	0.3992
0.500	-0.0620	-0.0403	-0.0319	-0.0287	-0.0268	-0.0256	-0.0247	-0.0240	-0.0234	-0.0232
0.200	-0.3756	-0.3228	-0.3100	-0.3038	-0.2998	-0.2967	-0.2942	-0.2920	-0.2899	-0.2892
0.180	-0.3869	-0.3439	-0.3285	-0.3222	-0.3179	-0.3146	-0.3119	-0.3096	-0.3074	-0.3066
0.160	-0.3854	-0.3688	-0.3467	-0.3406	-0.3361	-0.3326	-0.3297	-0.3271	-0.3248	-0.3239
0.140	-0.3690	-0.3965	-0.3652	-0.3587	-0.3543	-0.3506	-0.3474	-0.3446	-0.3422	-0.3412
0.120	-0.3381	-0.4200	-0.3876	-0.3766	-0.3721	-0.3685	-0.3652	-0.3622	-0.3595	-0.3585
0.100	-0.2960	-0.4250	-0.4168	-0.3978	-0.3899	-0.3859	-0.3827	-0.3797	-0.3769	-0.3758
0.080	-0.2472	-0.3979	-0.4419	-0.4284	-0.4142	-0.4054	-0.4001	-0.3965	-0.3936	-0.3925
0.060	-0.1951	-0.3372	-0.4272	-0.4491	-0.4469	-0.4380	-0.4286	-0.4206	-0.4143	-0.4121
0.040	-0.1392	-0.2547	-0.3480	-0.3980	-0.4259	-0.4407	-0.4474	-0.4490	-0.4475	-0.4463
0.020	-0.0757	-0.1517	-0.2223	-0.2633	-0.2907	-0.3113	-0.3278	-0.3412	-0.3523	-0.3562
0.000	0.0000	0.0000	0.0000	0.0000	0.0000	0.0000	0.0000	0.0000	0.0000	0.0000

the flow is incompressible, the net volumetric flow rate passing through these sections should be equal to zero, $Q=0$. The u -velocity and v -velocity profiles at every Reynolds number considered are integrated using Simpson's rule, then the obtained volumetric flow rate values are divided by a characteristic flow rate, Q_c , which is the horizontal rate that would occur in the absence of the side walls (Plane Couette flow), to help quantify the errors, as also suggested by Aydin and Fenner [1]. In an integration process the numerical errors will add up. Nevertheless, the volumetric flow rate values ($Q_1 = |\int_0^1 u dy|/Q_c$ and $Q_2 = |\int_0^1 v dx|/Q_c$) tabulated in Table VIII are close to zero such that, even the largest values of $Q_1 = 0.000000705$ and $Q_2 = 0.000002424$ in Table VIII can be considered as $Q_1 \approx Q_2 \approx 0$. This mathematical check on the conservation of the continuity shows that our numerical solution is indeed very accurate.

Distinctively than any other paper, Botella and Peyret [6] have tabulated highly accurate Chebyshev collocation spectral vorticity data from inside the cavity, along a vertical line and along a horizontal line passing through the geometric centre of the cavity, for $Re=1000$. Comparing our solutions with theirs [6] in Figures 9 and 10, we find that the agreement with Botella and Peyret [6] is remarkable, with the maximum difference between two solutions being 0.18%.

Between the whole range of $Re=1000$ and the maximum Re found in the literature, $Re=12\,500$, our computed results agreed well with the published results. Since there is no pre-

Table VII. Tabulated v -velocity profiles along a horizontal line passing through the geometric centre of the cavity at various Reynolds numbers.

x	Re									
	1000	2500	5000	7500	10 000	12 500	15 000	17 500	20 000	21 000
1.000	0.0000	0.0000	0.0000	0.0000	0.0000	0.0000	0.0000	0.0000	0.0000	0.0000
0.985	-0.0973	-0.1675	-0.2441	-0.2991	-0.3419	-0.3762	-0.4041	-0.4269	-0.4457	-0.4522
0.970	-0.2173	-0.3725	-0.5019	-0.5550	-0.5712	-0.5694	-0.5593	-0.5460	-0.5321	-0.5266
0.955	-0.3400	-0.5192	-0.5700	-0.5434	-0.5124	-0.4899	-0.4754	-0.4664	-0.4605	-0.4588
0.940	-0.4417	-0.5603	-0.5139	-0.4748	-0.4592	-0.4534	-0.4505	-0.4482	-0.4459	-0.4449
0.925	-0.5052	-0.5268	-0.4595	-0.4443	-0.4411	-0.4388	-0.4361	-0.4331	-0.4300	-0.4287
0.910	-0.5263	-0.4741	-0.4318	-0.4283	-0.4256	-0.4221	-0.4186	-0.4153	-0.4122	-0.4110
0.895	-0.5132	-0.4321	-0.4147	-0.4118	-0.4078	-0.4040	-0.4005	-0.3975	-0.3946	-0.3936
0.880	-0.4803	-0.4042	-0.3982	-0.3938	-0.3895	-0.3859	-0.3828	-0.3800	-0.3774	-0.3764
0.865	-0.4407	-0.3843	-0.3806	-0.3755	-0.3715	-0.3682	-0.3654	-0.3627	-0.3603	-0.3593
0.850	-0.4028	-0.3671	-0.3624	-0.3574	-0.3538	-0.3508	-0.3481	-0.3457	-0.3434	-0.3425
0.500	0.0258	0.0160	0.0117	0.0099	0.0088	0.0080	0.0074	0.0069	0.0065	0.0063
0.150	0.3756	0.3918	0.3699	0.3616	0.3562	0.3519	0.3483	0.3452	0.3423	0.3413
0.135	0.3705	0.4078	0.3878	0.3779	0.3722	0.3678	0.3641	0.3608	0.3579	0.3567
0.120	0.3605	0.4187	0.4070	0.3950	0.3885	0.3840	0.3801	0.3767	0.3736	0.3725
0.105	0.3460	0.4217	0.4260	0.4137	0.4056	0.4004	0.3964	0.3929	0.3897	0.3885
0.090	0.3273	0.4142	0.4403	0.4337	0.4247	0.4180	0.4132	0.4093	0.4060	0.4048
0.075	0.3041	0.3950	0.4426	0.4495	0.4449	0.4383	0.4323	0.4273	0.4232	0.4218
0.060	0.2746	0.3649	0.4258	0.4494	0.4566	0.4563	0.4529	0.4484	0.4438	0.4420
0.045	0.2349	0.3238	0.3868	0.4210	0.4409	0.4522	0.4580	0.4602	0.4601	0.4596
0.030	0.1792	0.2633	0.3263	0.3608	0.3844	0.4018	0.4152	0.4254	0.4332	0.4357
0.015	0.1019	0.1607	0.2160	0.2509	0.2756	0.2940	0.3083	0.3197	0.3290	0.3323
0.000	0.0000	0.0000	0.0000	0.0000	0.0000	0.0000	0.0000	0.0000	0.0000	0.0000

viously published results (to the best of our knowledge) of steady driven cavity flow beyond $Re > 12\,500$ in the literature, we decided to use Batchelor's [3] model in order to demonstrate the accuracy of our numerical solutions at higher Reynolds numbers. As seen in Figures 7 and 8, the u - and v -velocity profiles change almost linearly in the core of the primary vortex as Reynolds number increases. This would indicate that in this region the vorticity is uniform. As Re increases thin boundary layers are developed along the solid walls and the core fluid moves as a solid body with a uniform vorticity, in the manner suggested by Batchelor [3]. At high Reynolds numbers the vorticity at the core of the eddy is approximately constant and the flow in the core is governed by

$$\frac{\partial^2 \psi}{\partial x^2} + \frac{\partial^2 \psi}{\partial y^2} = C \quad (25)$$

where C is the constant vorticity value. With streamfunction value being $\psi = 0$ on the boundaries, inside the domain $(x, y) = ([-0.5, 0.5], [-0.5, 0.5])$ the following expression is a solution to Equation (25)

$$\psi = C \left(\frac{y^2}{2} - \frac{1}{8} + \sum_{n=1}^{\infty} A_n \cosh(2n-1)\pi x \cos(2n-1)\pi y \right) \quad (26)$$

Table VIII. Volumetric flow rates through a vertical line, Q_1 , and a horizontal line, Q_2 , passing through the geometric centre of the cavity.

Re	$Q_1 = \frac{ \int_0^1 u dy }{Q_c}$	$Q_2 = \frac{ \int_0^1 v dx }{Q_c}$
1000	0.000000045	0.000000134
2500	0.000000046	0.000000344
5000	0.000000067	0.000000693
7500	0.000000090	0.000001027
10 000	0.000000114	0.000001341
12 500	0.000000143	0.000001630
15 000	0.000000163	0.000001894
17 500	0.000000259	0.000002133
20 000	0.000000557	0.000002346
21 000	0.000000705	0.000002424

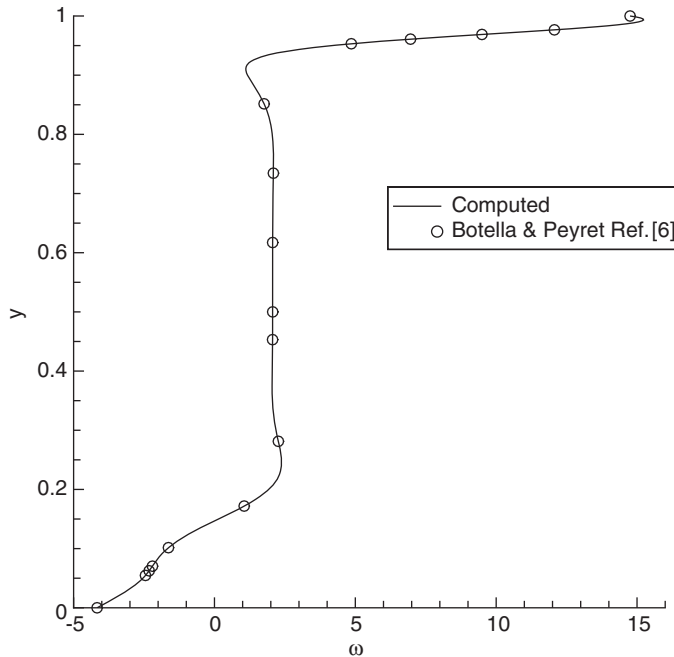


Figure 9. Computed vorticity values along a vertical line passing through the geometric centre of the cavity, $Re = 1000$.

where

$$A_n = \frac{4(-1)^{n+1}}{(2n-1)^3 \pi^3} (\cosh(n - \frac{1}{2})\pi)^{-1} \quad (27)$$

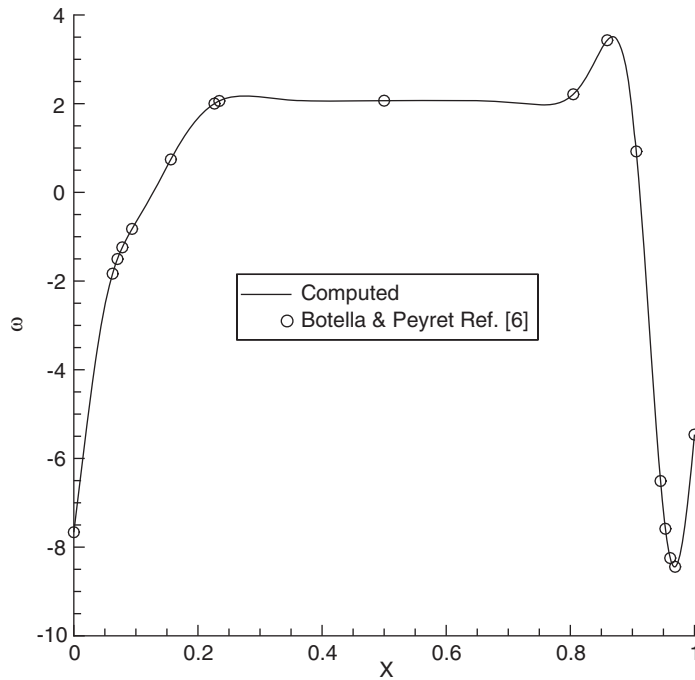


Figure 10. Computed vorticity values along a horizontal line passing through the geometric centre of the cavity, $Re = 1000$.

The mean square law proposed by Batchelor [3] relates the core vorticity value with the boundary velocities. From using the relation

$$\oint [(\psi_x)^2 + (\psi_y)^2] ds = \oint |U|^2 ds = 1 \tag{28}$$

where U is the boundary velocity, we can have

$$\begin{aligned} \frac{1}{C^2} = & \frac{1}{6} - \frac{16}{\pi^4} \sum_{n=1}^{\infty} \frac{1}{(2n-1)^4 (\cosh(n-1/2)\pi)^2} \\ & + 2 \int_{-\frac{1}{2}}^{\frac{1}{2}} \left(\frac{1}{2} + \pi \sum_{n=1}^{\infty} (-1)^n (2n-1) A_n \cosh(2n-1)\pi x \right)^2 dx \end{aligned} \tag{29}$$

From the above expression, the numerical value of C (vorticity value at the core) can be found approximately as 1.8859, in accordance with the theoretical core vorticity value of 1.886 at infinite Re , calculated analytically by Burggraf [8] in his application of Batchelor’s model [3], which consists of an inviscid core with uniform vorticity, coupled to boundary layer flows at the solid surface.

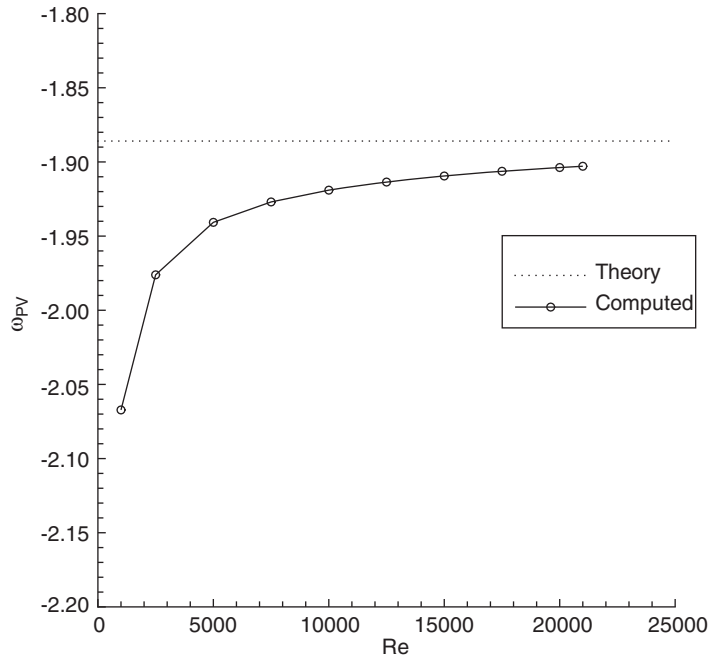


Figure 11. Strength of vorticity at the primary vortex as a function of Reynolds number.

In Figure 11 we have plotted the variation of the vorticity value at the centre of the primary vortex, tabulated in Table II, as a function of Reynolds number. In the same figure, the theoretical value of 1.8859 is shown with the dotted line. This figure clearly shows that our computations, in fact, in strong agreement with the mathematical theory [3, 8, 33] such that computed values of the vorticity at the primary vortex asymptote to the theoretical infinite Re vorticity value as the Reynolds number increases.

4. CONCLUSIONS

Fine grid numerical solutions of the steady driven cavity flow for Reynolds numbers up to $Re = 21\,000$ have been presented. The steady 2-D incompressible Navier–Stokes equations in streamfunction and vorticity formulation are solved computationally using the numerical method described. The streamfunction and vorticity equations are solved separately. For each equation, the numerical formulation requires the solution of two tridiagonal systems, which allows the use of large grid meshes easily. With this we have used a fine grid mesh of 601×601 . At all Reynolds numbers, the numerical solutions converged to maximum absolute residuals of the governing equations that were less than 10^{-10} .

Our computations indicate that fine grid mesh is necessary in order to obtain a steady solution and also resolve the vortices appear at the corners of the cavity, as the Reynolds number increases. Several unique features of the driven cavity flow have been presented such that the appearance of a quaternary vortex at the bottom left corner (BL3) at Reynolds number

of 10 000 on fine grid mesh, and a tertiary vortex at the top left corner (TL2) at Reynolds number of 12 500. Detailed results were presented and they were compared with results found in the literature. The presented results were found to agree well with the published numerical solutions and with the theory as well.

ACKNOWLEDGEMENTS

This study was funded by Gebze Institute of Technology with project no BAP-2003-A-22. E. Ertürk and C. Gökçöl are grateful for this financial support.

REFERENCES

1. Aydin M, Fenner RT. Boundary element analysis of driven cavity flow for low and moderate Reynolds numbers. *International Journal for Numerical Methods in Fluids* 2001; **37**:45–64.
2. Barragy E, Carey GF. Stream function-vorticity driven cavity solutions using p finite elements. *Computers and Fluids* 1997; **26**:453–468.
3. Batchelor GK. On steady laminar flow with closed streamlines at large Reynolds numbers. *Journal of Fluid Mechanics* 1956; **1**:177–190.
4. Beam RM, Warming RF. An implicit factored scheme for the compressible Navier–Stokes equations. *AIAA Journal* 1978; **16**:393–420.
5. Benjamin AS, Denny VE. On the convergence of numerical solutions for 2-D flows in a cavity at large Re. *Journal of Computational Physics* 1979; **33**:340–358.
6. Botella O, Peyret R. Benchmark spectral results on the lid-driven cavity flow. *Computers and Fluids* 1998; **27**:421–433.
7. Bruneau C-H, Jouron C. An efficient scheme for solving steady incompressible Navier–Stokes equations. *Journal of Computational Physics* 1990; **89**:389–413.
8. Burggraf OR. Analytical and numerical studies of the structure of steady separated flows. *Journal of Fluid Mechanics* 1966; **24**:113–151.
9. Erturk E, Corke TC. Boundary layer leading-edge receptivity to sound at incidence angles. *Journal of Fluid Mechanics* 2001; **444**:383–407.
10. Erturk E, Haddad OM, Corke TC. Laminar incompressible flow past parabolic bodies at angles of attack. *AIAA Journal* 2004; **42**:2254–2265.
11. Fortin A, Jardak M, Gervais JJ, Pierre R. Localization of Hopf bifurcations in fluid flow problems. *International Journal for Numerical Methods in Fluids* 1997; **24**:1185–1210.
12. Ghia U, Ghia KN, Shin CT. High-Re solutions for incompressible flow using the Navier–Stokes equations and a multigrid method. *Journal of Computational Physics* 1982; **48**:387–411.
13. Goyon O. High-Reynolds number solutions of Navier–Stokes equations using incremental unknowns. *Computer Methods in Applied Mechanics and Engineering* 1996; **130**:319–335.
14. Grigoriev MM, Dargush GF. A poly-region boundary element method for incompressible viscous fluid flows. *International Journal for Numerical Methods in Engineering* 1999; **46**:1127–1158.
15. Gupta MM. High accuracy solutions of incompressible Navier–Stokes equations. *Journal of Computational Physics* 1991; **93**:343–359.
16. Gupta MM, Manohar RP. Boundary approximations and accuracy in viscous flow computations. *Journal of Computational Physics* 1979; **31**:265–288.
17. Hou S, Zou Q, Chen S, Doolen G, Cogley AC. Simulation of cavity flow by the lattice Boltzmann method. *Journal of Computational Physics* 1995; **118**:329–347.
18. Li M, Tang T, Fornberg B. A compact fourth-order finite difference scheme for the steady incompressible Navier–Stokes equations. *International Journal for Numerical Methods in Fluids* 1995; **20**:1137–1151.
19. Liao SJ. Higher-order streamfunction-vorticity formulation of 2-D steady state Navier–Stokes equations. *International Journal for Numerical Methods in Fluids* 1992; **15**:595–612.
20. Liao SJ, Zhu JM. A short note on higher-order streamfunction-vorticity formulation of 2-D steady state Navier–Stokes equations. *International Journal for Numerical Methods in Fluids* 1996; **22**:1–9.
21. Nallasamy M, Prasad KK. On cavity flow at high Reynolds numbers. *Journal of Fluid Mechanics* 1977; **79**:391–414.
22. Nishida H, Satofuka N. Higher-order solutions of square driven cavity flow using a variable-order multi-grid method. *International Journal for Numerical Methods in Fluids* 1992; **34**:637–653.
23. Peng YF, Shiau YH, Hwang RR. Transition in a 2-D lid-driven cavity flow. *Computers and Fluids* 2003; **32**:337–352.

24. Poliashenko M, Aidun CK. A direct method for computation of simple bifurcations. *Journal of Computational Physics* 1995; **121**:246–260.
25. Rubin SG, Khosla PK. Navier–Stokes calculations with a coupled strongly implicit method. *Computers and Fluids* 1981; **9**:163–180.
26. Schreiber R, Keller HB. Driven cavity flows by efficient numerical techniques. *Journal of Computational Physics* 1983; **49**:310–333.
27. Shankar PN, Deshpande MD. Fluid mechanics in the driven cavity. *Annual Review of Fluid Mechanics* 2000; **32**:93–136.
28. Spatz WF. Accuracy and performance of numerical wall boundary conditions for steady 2D incompressible streamfunction vorticity. *International Journal for Numerical Methods in Fluids* 1998; **28**:737–757.
29. Tennehill JC, Anderson DA, Pletcher RH. *Computational Fluid Mechanics and Heat Transfer* (2nd edn). Taylor & Francis: London, 1997.
30. Thom A. The flow past circular cylinders at low speed. *Proceedings of the Royal Society of London Series A* 1933; **141**:651–669.
31. Vanka SP. Block-implicit multigrid solution of Navier–Stokes equations in primitive variables. *Journal of Computational Physics* 1986; **65**:138–158.
32. Weinan E, Jian-Guo L. Vorticity boundary condition and related issues for finite difference schemes. *Journal of Computational Physics* 1996; **124**:368–382.
33. Wood WW. Boundary layers whose streamlines are closed. *Journal of Fluid Mechanics* 1957; **2**:77–87.
34. Wright NG, Gaskell PH. An efficient multigrid approach to solving highly recirculating flows. *Computers and Fluids* 1995; **24**:63–79.
35. Napolitano M, Pascazio G, Quartapelle L. A review of vorticity conditions in the numerical solution of the $\xi - \psi$ equations. *Computers and Fluids* 1999; **28**:139–185.
36. Huang H, Wetton BR. Discrete compatibility in finite difference methods for viscous incompressible fluid flow. *Journal of Computational Physics* 1996; **126**:468–478.